

Our aim is the responsible usages of our product and the raw materials and energy sources that are necessary for the production.

Entering the paper machines and the RDF power plant is only permitted after registering or being accompanied by our employees

Order and Cleanliness: employees and guests are obliged to keep their work area as well as our facilities and sanitary facilities in a tidy condition. Impurities must be removed immediately and defects reported.

Your direct contact person or our management representative will be happy to answer any questions you may have!



Our guests are required to wear special ear protection in indicated areas. It can be obtained for temporary use at the entrance of the production hall.



Smoking and the use of open flames are strictly prohibited. This also applies to the outdoor area. Exceptions are the designated smoking islands



Bringing, consuming and passing on alcohol and / or drugs is not permitted. Anyone under the influence of alcohol and / or drugs will be expelled from the premises immediately at their own expense



Safety shoes must be worn when working in the production hall, workshop and storage areas. Guests without safety shoes please use the marked and specified paths



Bump caps are compulsory in the paper mills' buildings, helmets are compulsory in the EBS power plant. This does not apply to offices and training rooms



Safety vests are to be worn on factory premises. **Caution: moving cranes and forklifts!**



On-site machinery and moving machine parts are not to be touched under any circumstances.



Please take note of any guardrails or blocked off areas. Use the handrails on stairs and staircases.



Video and photography in and around the plant is strictly prohibited without the consent of the mill management.



The speed limit is restricted to 30 km/h. Walking speed is stipulated on train overpasses and construction areas. German traffic regulations apply. Please use the parking zone in front of the administration building.



Storing items or parking vehicles within the 5 meters safety zone of train tracks and overpasses is prohibited.

- The area in and around the plant and factory facilities is to be kept clean.
- Designated fire lanes and emergency areas are to be kept clear at all times.

In case of a fire alarm

- It is forbidden to park vehicles, handle open flames or do activities with flying sparks within a radius of 5 m around buildings, petrol stations, battery charging stations, silos and in front of transformer boxes! Parking on slider shafts is also prohibited.
- It is also prohibited to take water directly from the wall hydrants for purposes other than fire fighting
- The fire extinguishers belonging to the building equipment must not be used for purposes other than those intended
- In an emergency, the alarm is given by a siren tone and / or red warning lights.
- All persons, with the exception of the foremen / shift supervisors, must leave the building immediately and go to the assembly points in order to await further instructions there.



Assembly point: car parking at administration building => nearby Roll-Transportation-Bridge



Emergency phone number: 112



Emergency # for mobile phone use:
+49 (0) 3564 6 112

Emergency phones are located next to all stairwells.

If you place an emergency call, please communicate the following information:

Where did it happen?
When did it happen?
What happened?
How many people were injured?
Who are you?

Wait for further instructions.

Please help guide the emergency team!

In case of a fire:

Inform those who are in danger!
Assist others!
Do not use elevators!
Follow the emergency exits!
Wait for further instructions!

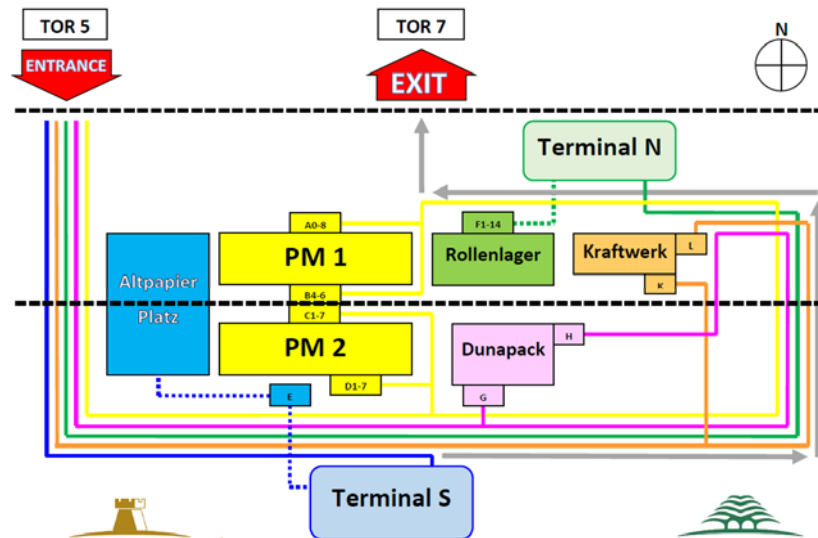
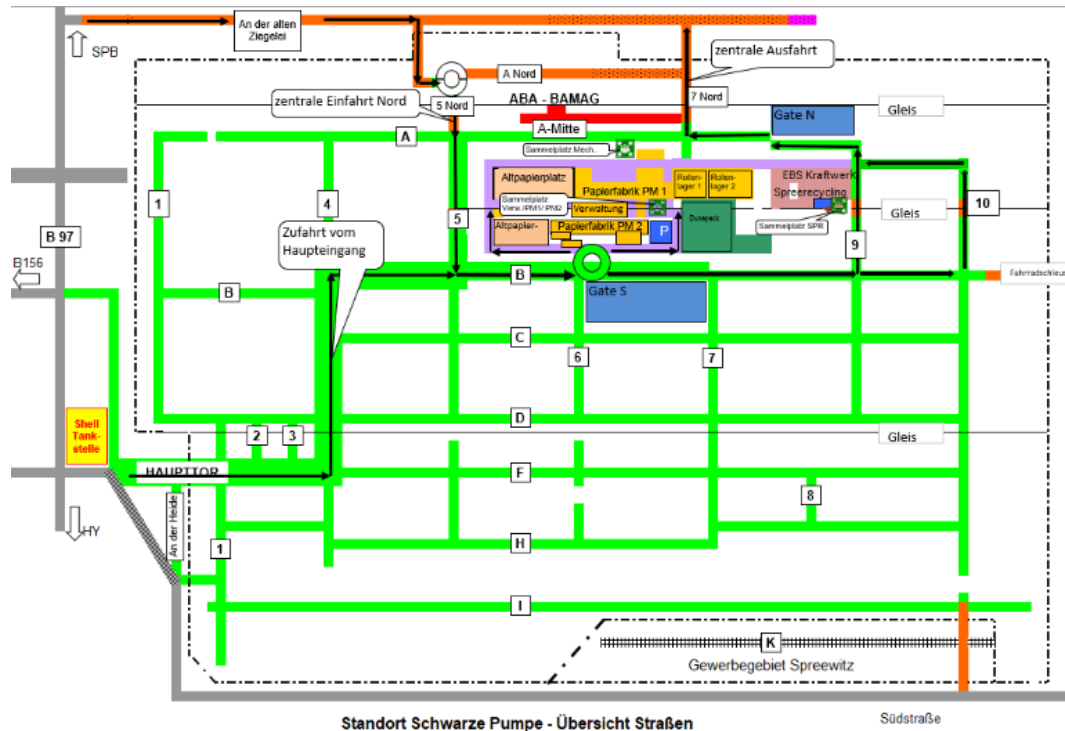
Inform administrative staff: +49 (0) 3564 69 47 26
Other incidents: +49 (0) 162 279 03 33
Shiftleader on duty: +49 (0) 162 279 03 19

**We wish you an enjoyable,
successful and
accident-free stay!**



Visitor's Guide Safety Instructions

Welcome to our
Paper mill Spremberg



Dear guest,

please observe the following whilst on factory premises:

- Upon arrival please report to the reception in the administration building.
- Plant equipment is not allowed to be operated, modified or removed without permission.
- All injuries and accidents must be reported to the PIC immediately.
- We reserve the right to check vehicles and loads.

Your safety is our priority.

Hamburger Rieger GmbH, Papierfabrik Spremberg
An der Heide B5, 03130 Spremberg
Tel.: 03564 378 0
E-Mail: office.spr@hamburger-containerboard.com